

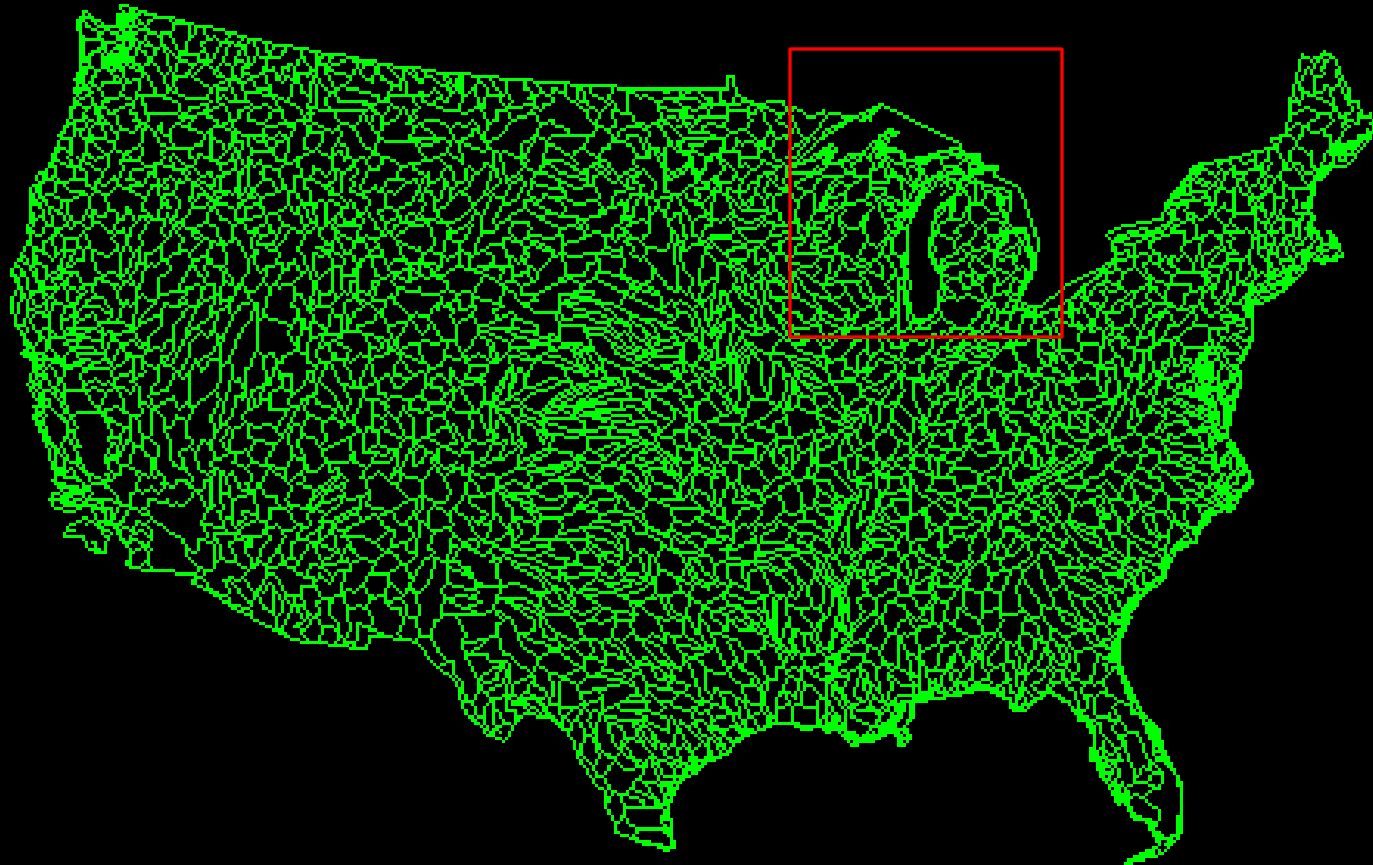


Community Engagement for Watershed Restoration in Grand Rapids, Michigan

Calvin College
Plaster Creek Stewards

Gail Gunst Heffner, Ph.D.
RCE Grand Rapids

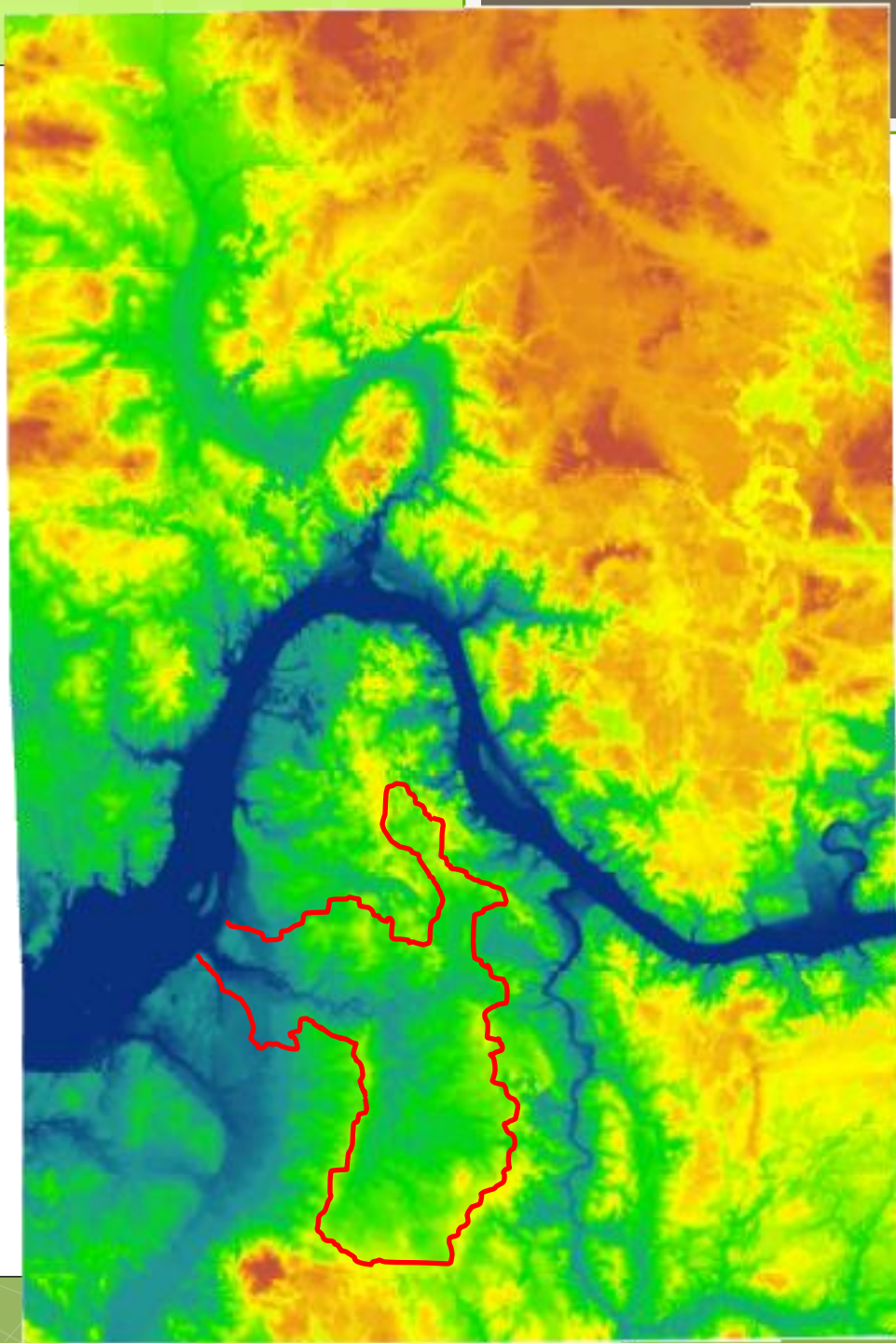
Hydrologic Units map



Watersheds are topographical and hydrological units that integrate the landscape into nested sets of drainages.

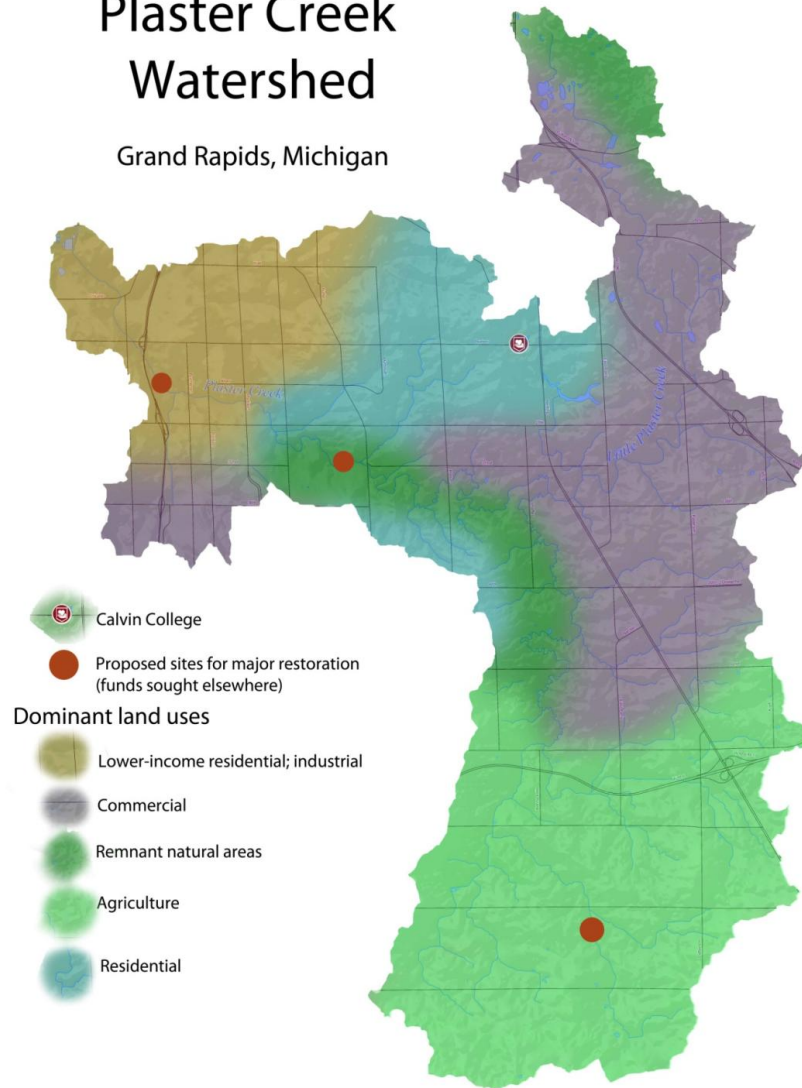
Lake Michigan Watershed (or Drainage Basin)





Plaster Creek Watershed

Grand Rapids, Michigan

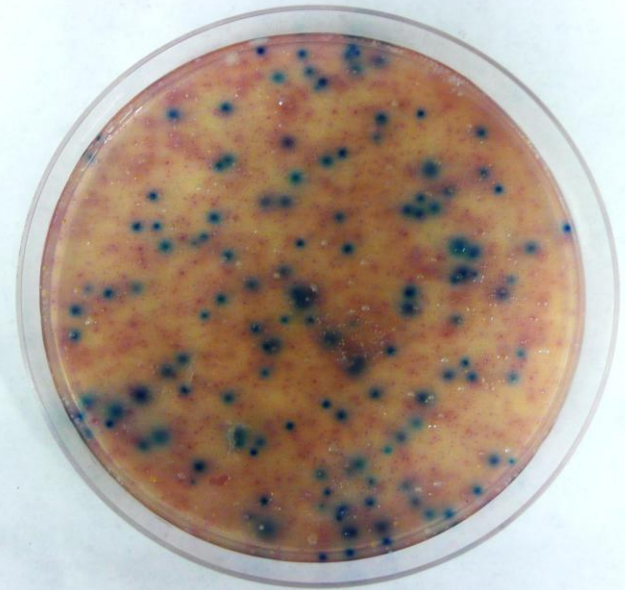
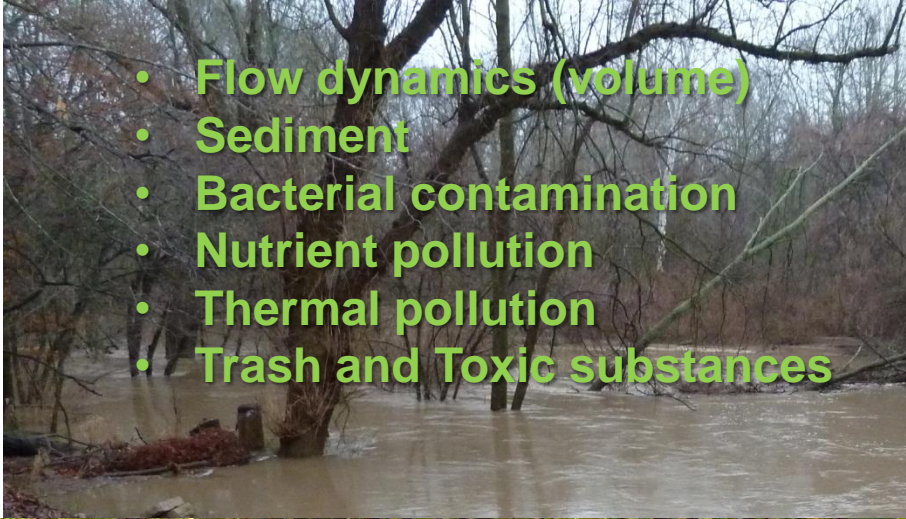


Background statistics:

- Length: approx. 14 miles
- Watershed area: 58 mi²
- Governmental units: 9 (4 municipalities & 5 townships)
- >172 churches & 100 schools
- >50% of Calvin faculty/ staff

Main Problems

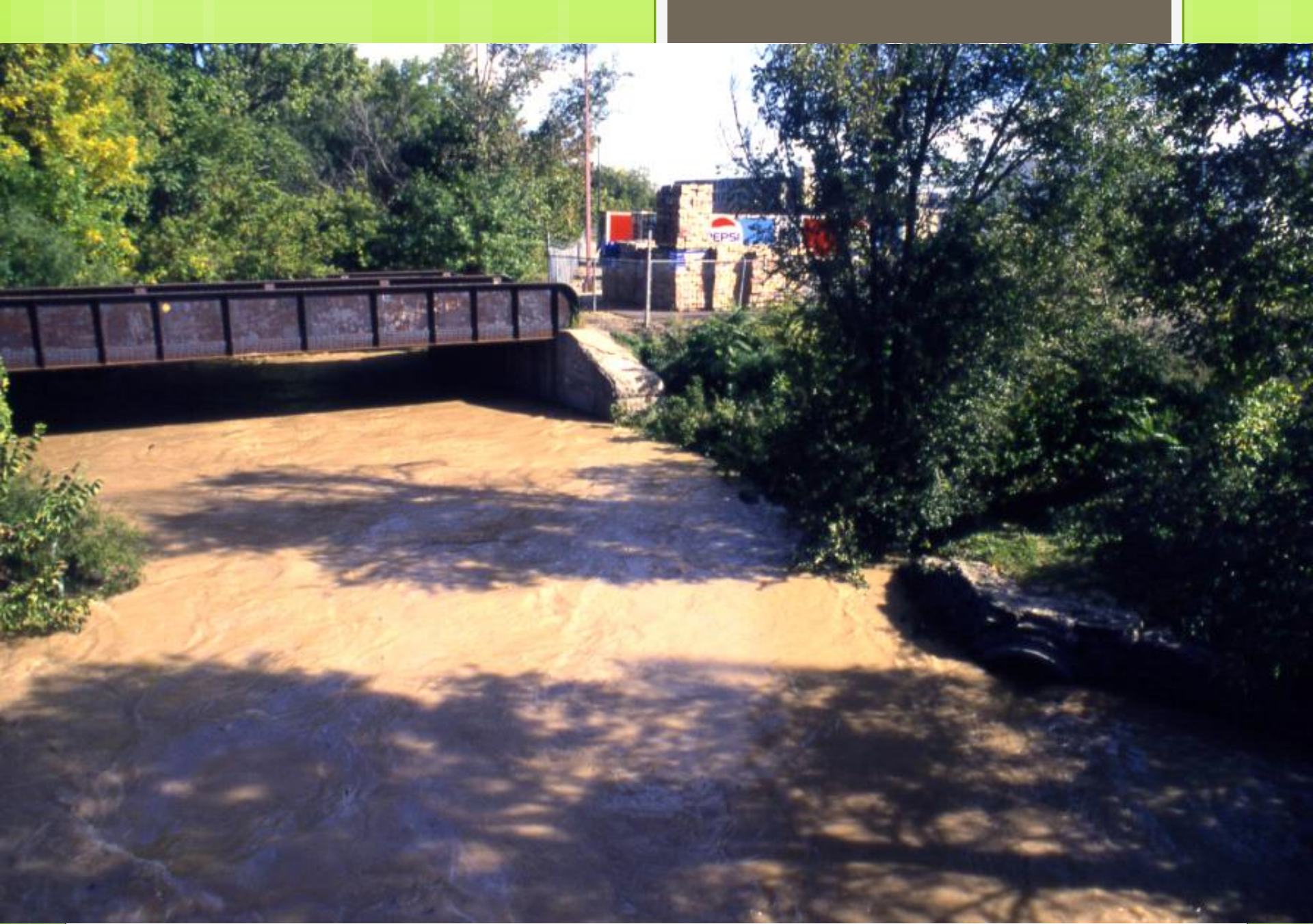
- Flow dynamics (volume)
- Sediment
- Bacterial contamination
- Nutrient pollution
- Thermal pollution
- Trash and Toxic substances



>5000 E. coli
colonies per
100ml!

Safe for body
contact= 130 E. coli
colonies/ 100 ml







April 2013

Plaster Creek Stewards



A collaboration of Calvin College, churches, schools, and community partners working to restore health and beauty to the Plaster Creek Watershed.



Education and Outreach builds awareness and concern

Research leads to a
better understanding
of how best to help

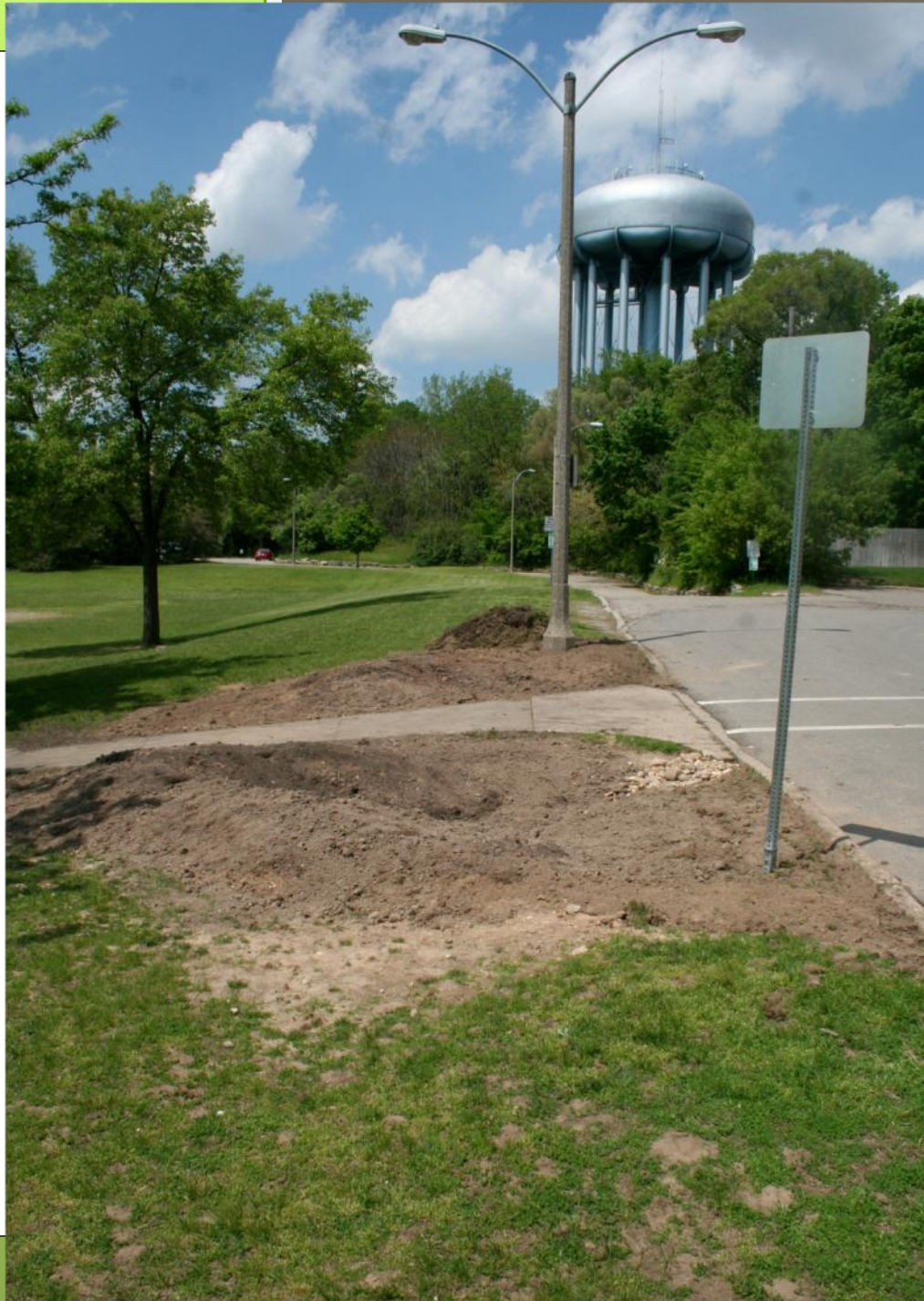


Social Research

- Oral History Project: Remembering and recording stories about the creek
- Documenting oral histories becomes a way to engage people in watershed protection



Restoration
implements
healthier
watershed
practices

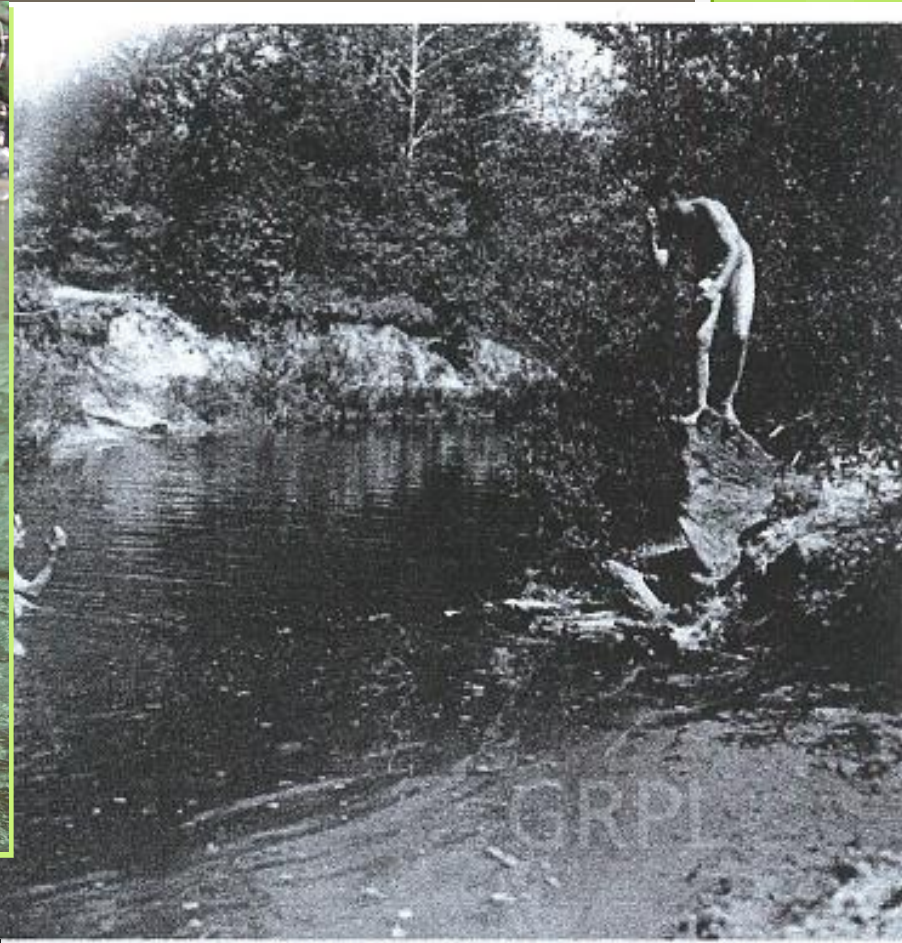




Outcomes to date

- Educated more than 1500 people (from ages 3-85)
- Completed 60 educational presentations to school groups, churches, and community organizations
- Volunteers clocked 3,600 hours at various education/action events
- Completed more than 12 on-the-ground major restoration projects
- Received 4 major grants totaling more than \$1.6 million for watershed restoration

Hopeful Vision



Find us on the web:
www.calvin.edu/go/plastercreekstewards

OR

Follow us on Facebook under Plaster Creek Stewards